

EXPRESSIONS Whirinaki

WE ARE GROWING

We are adding some great spaces and experiences to our Centre. Here is what the extension looks like, what we are doing and what you need to know.



Find us

836 Fergusson Drive
P O Box 40 594, Upper Hutt



Need to get hold of us

04 527 2168
info@expressions.org.nz



Look us up

expressions.org.nz



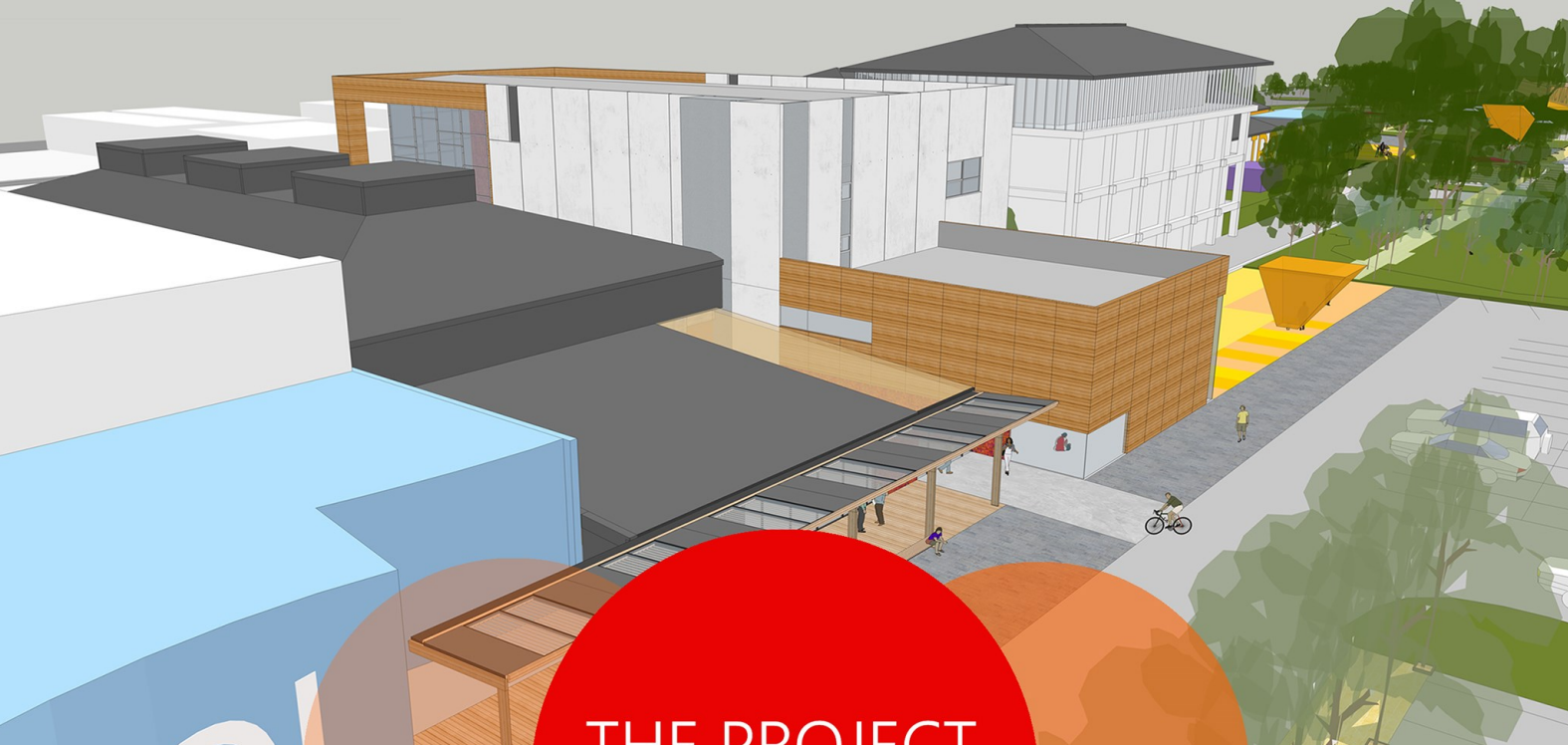
Like us on facebook

Expressions Arts & Entertainment Centre



Follow us on instagram

#expressions_whirinaki



THE PROJECT

WHAT'S GOING ON ?

In 2015 the Trust identified the need to extend the Centre to accommodate the extraordinary growth in visitors and to meet the needs of the local community. Upper Hutt City Council consulted with the community in its 2015-2025 Long Term Plan and after a detailed Feasibility Study and with great community support, got the green tick in 2017!

The extension of Expressions Whirinaki will see the addition of two new galleries. The Gillies Gallery is a Heritage Gallery where we will learn about our local history, and the Heretaunga Rotary Gallery which will focus on hands-on interactive experiences. We are including collection storage to protect the Pumpkin Cottage Collection, a community creative workshop where creative learning can take place and a commercial kitchen for the recreation hall. A related works project will see the retro fitting of a new fire sprinkler system throughout the centre in order to bring the Centre up to code.

The extension takes place in the carpark at the rear of the Centre. The detailed architectural plans have been completed by Athfeild Architects (and look great) and building consent has been granted. Construction is set to start late 2019 with Maycroft Construction leading the project. The finished extension will be open from early 2021.

HOW WILL CONSTRUCTION EFFECT YOU

Don't worry; we are staying open throughout the whole process, however some parts of the Centre will be temporarily closed and some points of access will change. During this period of growth, there will be some changes to the way the Centre will be run and we are going to need your patience and understanding as we navigate through this period of change. We will be working hard to minimise any impact to our audience, with your safety being the top priority and we will keep you updated as time goes by.



WHAT YOU NEED TO KNOW

GOODNESS IT'S NOISY! Yes...there will be times when it will be noisy inside the galleries and around the construction site. If you are holding an event or attending an event in the Centre, we will ensure that construction will not take place during those occasions.

WHY IS THE FOYER CLOSED? The foyer space will be closed from the 23 December 2019 to 13 March 2020. This is for the retro-fitting of fire sprinklers to the building. You will be able to access the i-SITE and the galleries from a temporary side door in the alleyway between the Council building and Expressions Whirinaki.

WHATS GOING ON IN THE CAFE? The Café will be completely closed from 23 December - 27 January for their Christmas/summer break. When the cafe opens, access will only be through the sliding front doors (not the main entry) until 13 March 2020.

EEK! HOW DO I GET INTO THE HALL? During construction there will be no access from the back of the building to the Hall. Access to the Hall will be done either through the main foyer space or through the two Fergusson Drive doors, which open direct into the Hall. If you need access to these doors please talk with us.

I'VE GOT STUFF TO LOAD IN. If you are loading into the theatre, galleries or making deliveries for events this will need to be through the front of the building. Please contact us to arrange this in person.

WHERE DO I PARK? Sorry, during construction some of the car parking to the rear of the building will be taken up by construction. We suggest using public transport if you can or parking further away and walking to the Centre. The disability carpark on Fergusson Drive by the library will remain.

HOW DO I GET TO THE FRONT DOOR? It might look a bit different... but access from the rear carpark to the front of the building will still be through the alleyway between Upper Hutt City Council and the Centre. There will be signs to help direct you.

I'M BRINGING A CLASS. Great! Our education classes will run the whole time through construction. If you are arriving on a bus, please drop off students in the curved pull-in area outside Upper Hutt City Council on Fergusson Drive or park in Wilson Avenue, across the road from Upper Hutt School and walk along Fergusson Drive (see map). Also from January-March 2020 our education classes will take place in the CD Room (a large room on the ground floor of Upper Hutt City Council), right next door. Just head to Expressions Whirinaki as usual and meet out the front and our Education team will meet you there.